



# Delta ToF Camera DMV-T

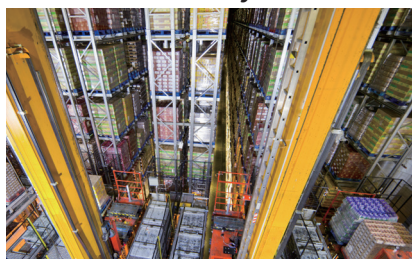
## The Ideal Solution for High-speed 3D Data Collection and Object Detection



- High-speed 3D data collection**  
 Receives 3D information through the ToF sensor at high speed; The frame rate is up to 60 fps
- Object position feedback for advanced robotic applications**  
 Captures point clouds for object coordinates and depths to integrate with robotic arms for pick & place and processing
- Built-in processor enhances application flexibility**  
 Built-in ARM processor to calculate partial images with the camera to enhance overall operation speed
- High protection level suitable for various scenarios**  
 IP67, suitable for harsh environments

## Applications

### Automatic Storage & Retrieval System



### Pick & Place Robot Guiding



### Volume Measurement



## Specifications

Sensor Model	Sony IMX556	Field of View	67° x 51°
Resolution	640 x 480 px, 0.3 MP	Protection	IP67, IP66
Frame Rate	60 FPS	Casing Material	Aluminum Alloy
VCSEL Wavelength	850 nm x2	Certification	CE, UL, KC, WEEE, RoHS, cUL, UKCA
Modulation Frequency	100 MHz (Configurable)	Power Input	24 V <sub>DC</sub> , PoE
Processor	ARM Dual Cortex-A53	Communications	10/100/1000 Ethernet, GigE Vision 2.0 Compliant, TCP/IP
Working Distance	0.2 ~ 6 m	I/O	8 pin M12 connector

### Industrial Automation Headquarters

Delta Electronics, Inc.  
Taoyuan Technology Center

IA.MKT@deltaww.com  
TEL: +886-3-3626301 / FAX: +886-3-3716301

### Europe

Delta Electronics (Netherlands) B.V.  
Sales.IA.EMEA@deltaww.com  
TEL: +31-40-800-3900

### Americas

Delta Electronics (Americas) Ltd.  
Customerservice.IA@deltaww.com  
TEL: +1-919-767-3813 / FAX: +1-919-767-3969

[www.deltaww.com](http://www.deltaww.com)

DELTA\_IA-SSM\_DMV-T\_F\_EN\_20230313