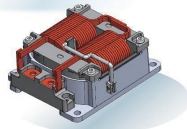
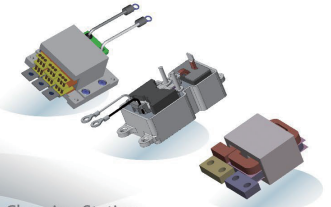


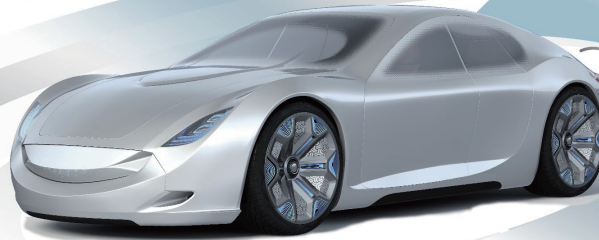
Traction Inverter
Boost Choke(Reactor)



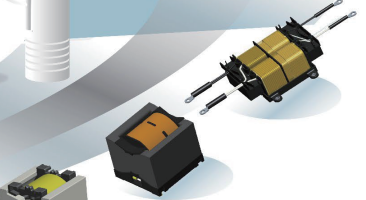
HV-LV DC-DC Converter
Resonant Choke
Transformer
Output Choke



BMS
Shunt Sensor
Shunt Sensor Module

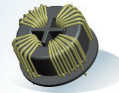


Charging Station



On Board Charger / Wireless Charger

EMI Common Mode Choke
PFC Choke
Resonant Choke
Transformer

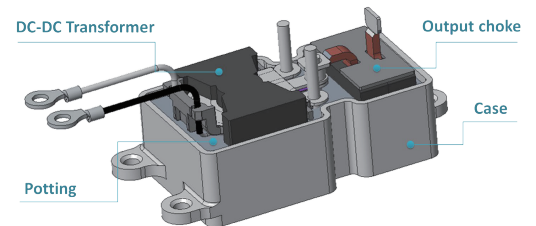
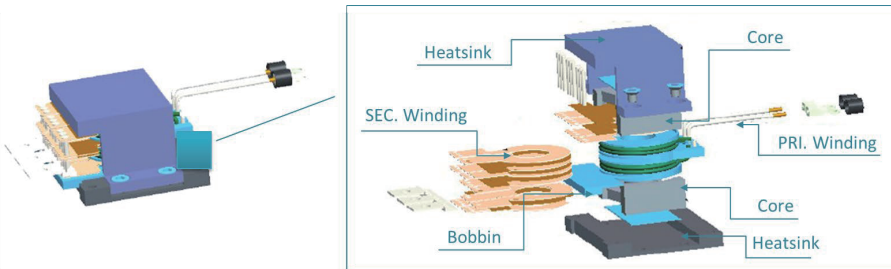


OBC / HV-LV DC-DC用高出カトランス

効率的な放熱を有するトランス/チョークモジュール

Hybrid winding configuration design with balanced current distribution among winding

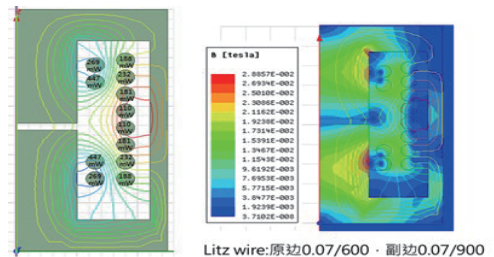
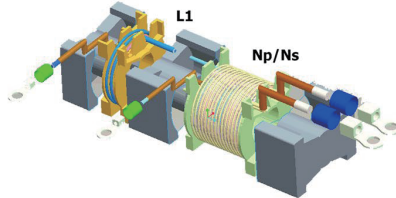
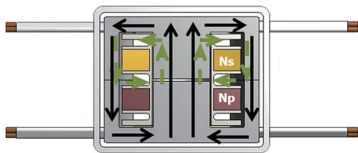
High power density integration with efficient and cost effective heat dissipation



高効率の統合LLCトランス

High Leakage transformer design with sectional winding and controlled reluctance

Winding configuration optimization to minimize high frequency copper loss



シャントセンサー BMS(バッテリー管理システム)用

	Series	Part Number	Dim (mm)		Power Rating(W)	Resistance Values(mΩ)	Resistance Tolerance	TCR (ppm/°C)
			L	W				
	6918	VSMA6918SY	69.25	18.0	36	0.1	5%(J)	0.1mΩ: ±100
		VSPA6918SY	69.25	18.0	36	0.1	5%(J)	0.1mΩ: ±100
	8420	VSMA8420SY	84.0	20.0	36	0.1 / 0.05	5%(J)	0.1mΩ: ±100 / 0.05 mΩ: ±150
		VSPA8420SY	84.0	20.0	36	0.1 / 0.05	5%(J)	0.1mΩ: ±100 / 0.05 mΩ: ±150
	8436	VSMA8436SY	84.0	36.0	36	0.025	5%(J)	0.025mΩ: ±100
		VSPA8436SY	84.0	36.0	36	0.025	5%(J)	0.025mΩ: ±100